

Glen Park Marketplace

Glen Park
(District 8)

This project will be located on Diamond Street in the heart of the Glen Park shopping district. The Glen Park marketplace will replace a neighborhood grocery store that burned in 1999 with a new grocery store topped with 15 townhouse condominiums, and a new Glen Park branch library.



VIEW FROM DIAMOND STREET

Total Number of Units	15
Affordable Units	2 (12%)
Parking Spaces	15
Other Amenities	Ground floor neighborhood grocery store Branch library

Approvals History:

7/19/02	Endorsed by SFHAC
12/05/02	Planning Commission APPROVED
2/04/03	Appealed to Board of Supervisors
2/04/03	Board rejected appeal and APPROVED the project

Developer: David Prowler
Architect: Peterson Architects

Status:

Broke ground July 2004. Expected completion of Condos by late 2005.

Folsom and Dore

SOMA
(District 6)

This project provides affordable housing for people with disabilities, HIV/AIDS, and other low income people. With only 12 residential parking spaces (plus a 14 space neighborhood garage), a City Carshare pod and bicycle parking provides alternatives to private car use. The entry garden court transition between the hard urban exterior and the new dwellings. An existing brick facade will become part of the Folsom Street façade.



FOLSOM & DORE CORNER



ENTRANCE

Total Number of Units	98
Affordable Units	98 (100%)
Parking Spaces	12
Other Amenities	14 neighbor parking spaces 4 CarShare spaces 32 bicycle spaces 3,600 square feet community space

Approvals History:

10/18/02	Endorsed by SFHAC
11/14/02	Board of Appeals APPROVED

Developer: Citizens' Housing Corporation
Architect: David Baker & Partners

Status:

OCCUPIED in April 2005!

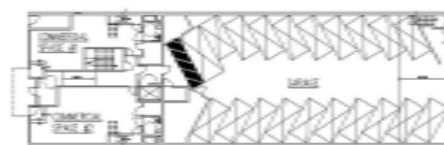
1168 Folsom Street

SOMA
(District 6)

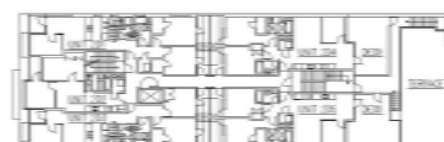
Currently the site of a vacant shed, 1168 Folsom Street will be a five story building with 20 2- and 3-bedroom units, 2100 square feet of ground level commercial space on Folsom Street, and a 20 space parking garage accessed from Clementina Street. This part of South of Market has a mix of uses, building sizes and styles. The building provides for continuity of both Folsom and Clementina street façades and active, street level uses.



FOLSOM STREET VIEW



GROUND FLOOR PLAN



FIRST FLOOR PLAN

Total Number of Units	20
Affordable Units	2 (12%)
Parking Spaces	20
Other Amenities	2100 s.f. ground floor retail

Approvals History:

10/28/02	Endorsed by SFHAC
10/28/02	Planning Commission denied permit; Developer appealed denial
4/30/03	Appeal heard by Board of Appeals, appeal upheld, APPROVED

Developer: George F. Hauser
Architect: Hauser Architects

Status:

Scheduled for completion this Summer, 2005.